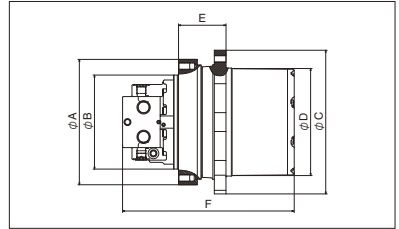
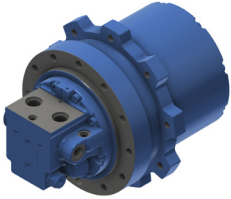


## TH Series



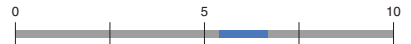
### [Main Application]

- Compact track loaders, crawler carriers, traveling units for agricultural machinery

### [Features]

- Compatible with HST system
- Motor unit with reducer for high speed and high pressure
- Built-in parking brake
- 2-speed motor (high/low speed)

Rated output torque [kN-m]



### ■ Specification

		TH06VB	TH07VB
Rated Output Torque	N-m	5390	6670
Max. Output Speed	min-1	130	170
Max. Pressure	MPa	34.3	41.2
Max. Flow Rate (ref.)	L/min	72	110

### ■ Outline Dimensions

		TH06VB	TH07VB
A	mm	270	280
B	mm	200	210
C	mm	279	321
D	mm	200	241.3
E	mm	106	106
F	mm	361	383.5