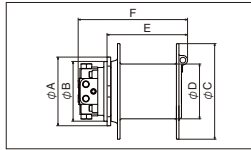
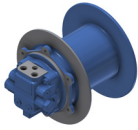


## WRD/CH Series



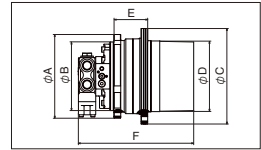
**WRD Series**

**[Main Application]**

- Winch units for elevated work vehicles, mini crawler cranes, etc.

**[Features]**

- Lightweight and compact with its integrated drum structure
- Built-in parking brake



**CH Series**

**[Main Application]**

- Winch units for rough terrain cranes, truck cranes, etc.

**[Features]**

- Drum-in type compact design
- High-speed rotation support
- Built-in parking brake
- 2-speed motor (high/low speed)



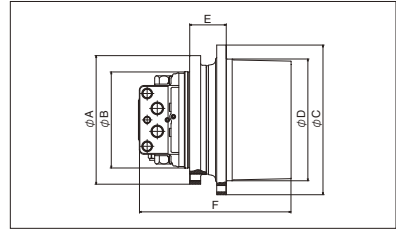
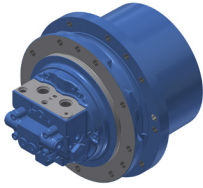
**■ Specification**

|  |       | WRD010 | CH05VA2 | CH12VB2 | CH18VB | CH04H | CH10VH |
|--|-------|--------|---------|---------|--------|-------|--------|
| Rated Output Torque                        | N-m   | 1230   | 4600    | 11500   | 18000  | 3920  | 9810   |
| Max. Output Speed                          | min-1 | 189    | 170     | 150     | 126    | 120   | 100    |
| Max. Pressure                              | MPa   | 20.6   | 25      | 29.4    | 29.4   | 24.5  | 25     |
| Rated Flow Rate (at counter balance valve) | L/min | 70     | 155     | 280     | 400    | 155   | 155    |

**■ Outline Dimensions**

|   |    | WRD010 | CH05VA2 | CH12VB2 | CH18VB | CH04H | CH10VH |
|---|----|--------|---------|---------|--------|-------|--------|
| A | mm | 230    | 280     | 330     | 354    | 260   | 280    |
| B | mm | 166    | 210     | 270     | 290    | 200   | 210    |
| C | mm | 400    | 321     | 376     | 404    | 279   | 326    |
| D | mm | 75     | 241.3   | 280     | 324    | 200   | 265    |
| E | mm | 362.5  | 101     | 133     | 131    | 84.5  | 80     |
| F | mm | 441    | 341     | 453.5   | 482    | 341   | 332    |

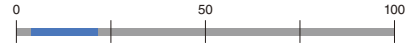
## GM Series



### [Main Application]

- Traveling unit for various construction machines such as hydraulic excavators

Rated output torque [kN-m]



### [Features]

- Compact, high-efficiency motor unit with reducer
- High reliability proven by many years of market experience
- Shockless relief valve, built-in parking brake
- 2-speed motor (high/low speed)

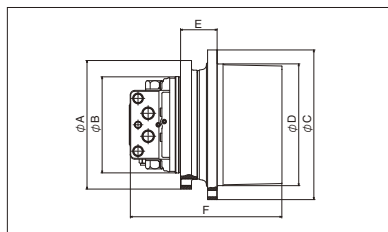
### ■ Specification

|                                    |       | GM04VA  | GM06VB | GM07VC2 | GM10VA2 | GM11VA2 | GM21VB | GM22VB |
|------------------------------------|-------|---------|--------|---------|---------|---------|--------|--------|
| Rated Output Torque                | N-m   | 4020    | 5840   | 6860    | 9810    | 10790   | 20600  | 21600  |
| Max. Output Speed                  | min-1 | 60      | 60     | 60      | 60      | 60      | 60     | 60     |
| Max. Pressure                      | MPa   | 24.5    | 24.5   | 31.4    | 31.4    | 31.4    | 35     | 35     |
| Max. Flow Rate (ref.)              | L/min | 37      | 50     | 64      | 93      | 93      | 128    | 128    |
| Applicable Excavator Weight (ref.) | ton   | 2.5~4.5 | 4~5.6  | 5.5~6.2 | 6~8     | 6~8     | 9~14   | 9~14   |

### ■ Outline Dimensions

|   |    | GM04VA | GM06VB | GM07VC2 | GM10VA2 | GM11VA2 | GM21VB | GM22VB |
|---|----|--------|--------|---------|---------|---------|--------|--------|
| A | mm | 215    | 246    | 268     | 280     | 280     | 308    | 308    |
| B | mm | 165    | 180    | 210     | 210     | 210     | 246    | 246    |
| C | mm | 255    | 288    | 306     | 326     | 326     | 394    | 394    |
| D | mm | 204    | 230    | 250     | 265     | 265     | 324    | 324    |
| E | mm | 70     | 75.5   | 68      | 80      | 80      | 99.5   | 99.5   |
| F | mm | 267.5  | 272.2  | 315     | 332.5   | 332.5   | 402    | 402    |

## GM Series



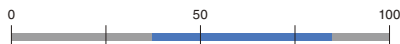
### [Main Application]

- Traveling unit for various construction machines such as hydraulic excavators

### [Features]

- Compact, high-efficiency motor unit with reducer
- High reliability proven by many years of market experience
- Shockless relief valve, built-in parking brake
- 2-speed motor (high/low speed)

Rated output torque [kN-m]



### ■ Specification

|                                    |       | GM38VB | GM38VC | GM60VB2 | GM70VA | GM85VA |
|------------------------------------|-------|--------|--------|---------|--------|--------|
| Rated Output Torque                | N-m   | 37300  | 36870  | 59400   | 66200  | 84800  |
| Max. Output Speed                  | min-1 | 50     | 50     | 45      | 40     | 35     |
| Max. Pressure                      | MPa   | 35     | 35     | 34.3    | 34.3   | 34.3   |
| Max. Flow Rate (ref.)              | L/min | 220    | 220    | 346     | 336    | 357    |
| Applicable Excavator Weight (ref.) | ton   | 15~25  | 15~25  | 29~34   | 34~40  | 41~48  |

### ■ Outline Dimensions

|   |    | GM38VB | GM38VC | GM60VB2 | GM70VA | GM85VA |
|---|----|--------|--------|---------|--------|--------|
| A | mm | 370    | 370    | 480     | 462    | 493    |
| B | mm | 300    | 300    | 380     | 380    | 410    |
| C | mm | 470    | 470    | 525     | 568    | 665    |
| D | mm | 402    | 402    | 450     | 490    | 570    |
| E | mm | 98.5   | 98.5   | 102.5   | 112    | 148    |
| F | mm | 531    | 444    | 565     | 617    | 629    |